

# E-Power

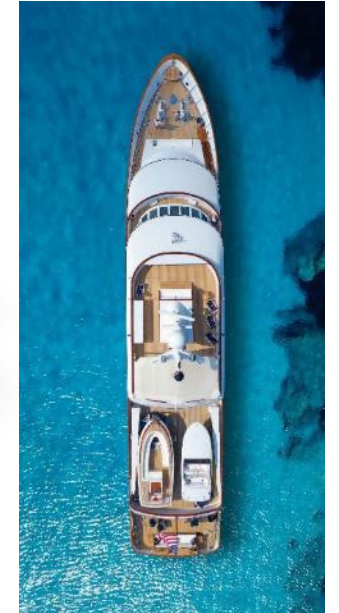
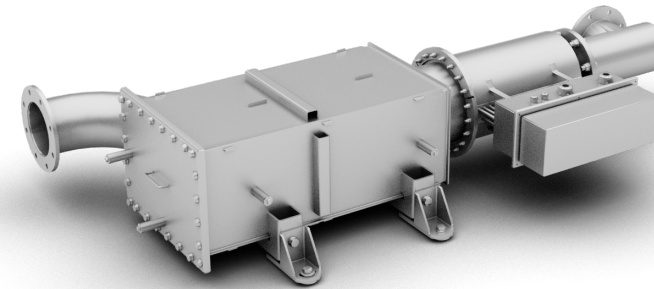
Have a clean deck

## benefits

- Active **regenerated DPF** reduces black carbon emissions **up to 99%**
- No water contamination by **soot and oil**
- Always **clean** upholstery and teak
- **Fully automated DPF** regeneration independent of engine operation
- **Integrated load-bank function** to keep your engine clean

## technical description

- For Diesel gensets in the range of **55kW to 200kW**
- Available **as 208V or 400V installation**
- **Very low maintenance** required due to absence of moving parts
- Integrated soot load control assures **minimal fuel consumption**
- **Highly flexible integration** into any engine room design
- **No Sulfur limitation on MDO fuel**



## applications

- Diesel gensets up to 200kW
- Displacement or planning hull Yacht

Innovation

RFQ ready

In production

## certification

Type approved  
by members of

